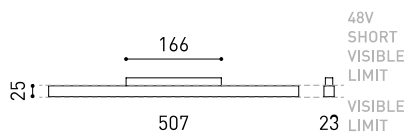




## DIMENSIONES



## ACCESORIOS



TRACK 48V OPTIONS

## PRODUCTO

Nombre	LINE 500 48V 4000K N
Referencia	A3761012N
Color	Negro Mate
RAL	Anodizado, baño de color, similar a RAL 9005
Categoría	TRACKLIGHTS

## FUENTE DE LUZ

Tipo	LED
Flujo Luminoso	1650 lm
Temperatura de color	4000 K
Estabilidad cromática	MacAdam Step 2
Índice de reproducción cromática	CRI > 90
Potencia	10,5 W
Corriente	350 mA
Eficacia	157 lm/W
Horas de Vida del LED	L80B10 > 60.000h

## LUMINARIA | DATOS FOTOMÉTRICOS

Eficiencia Lumínica	43%
Ángulo del haz de luz	98°

## LUMINARIA | DATOS ELÉCTRICOS

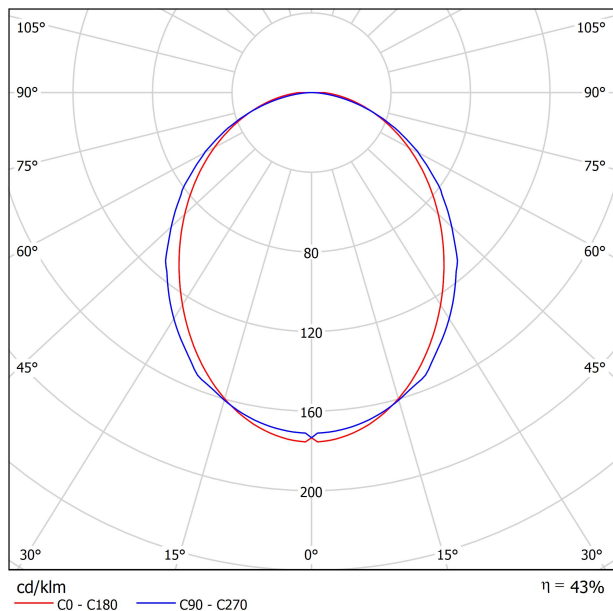
Driver	Incluido
Potencia del sistema	11,05 W
Tensión	48Vdc
Regulación	No Dim
Clase de seguridad eléctrica	II

## OTROS DATOS

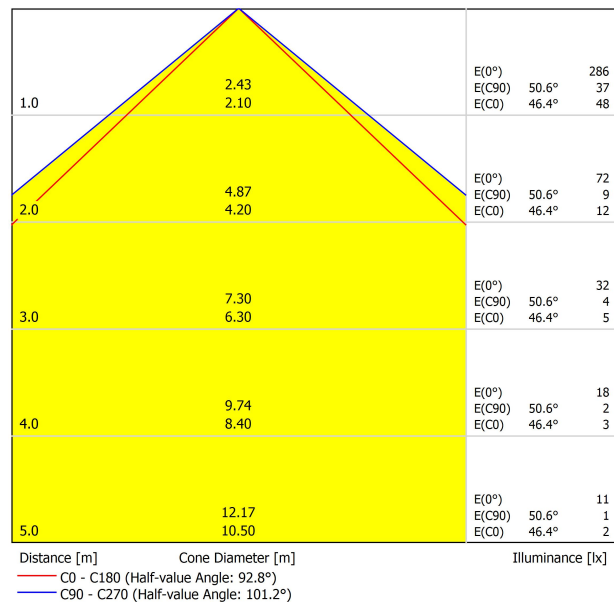
Estanqueidad	IP20
Control inalámbrico	Consultar
Tipo de carril	Track 48V
Peso	230 g
Peso con embalaje	400 g
Dimensiones embalaje	Ø55 x 550 mm
Unidades por embalaje	1
Materiales	Aluminio / Policarbonato

Line 48V es la luminaria lineal de luz difusa para aplicación en carril de bajo voltaje 48V. Esta solución traslada a este sistema de carril las características lumínicas y las ventajas de la iluminación longitudinal con difusor para aplicaciones de luz general.

## DIAGRAMA POLAR

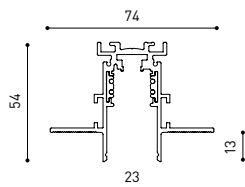


## DIAGRAMA CÓNICO



## UGR

Glare Evaluation According to UGR												
		70	70	50	50	30	70	70	50	50	30	30
p Ceiling		70	70	50	50	30	70	70	50	50	30	30
p Walls		50	30	50	30	30	50	30	50	30	30	30
p Floor		20	20	20	20	20	20	20	20	20	20	20
Room Size X Y		Viewing direction at right angles to lamp axis					Viewing direction parallel to lamp axis					
2H	2H	22.4	23.7	22.7	23.9	24.1	22.8	24.1	23.1	24.3	24.5	24.5
	3H	24.1	25.3	24.5	25.6	25.8	24.5	25.7	24.8	25.9	26.2	26.2
	4H	24.9	26.0	25.2	26.3	26.6	25.1	26.2	25.4	26.5	26.8	26.8
	6H	25.5	26.5	25.9	26.8	27.2	25.5	26.6	25.9	26.9	27.2	27.2
	8H	25.8	26.8	26.1	27.1	27.4	25.7	26.7	26.0	27.0	27.3	27.3
4H	12H	26.0	27.0	26.4	27.3	27.7	25.7	26.7	26.1	27.0	27.4	27.4
	2H	23.0	24.1	23.3	24.4	24.7	23.3	24.4	23.6	24.7	25.0	25.0
	3H	25.0	25.9	25.4	26.3	26.6	25.2	26.2	25.6	26.5	26.9	26.9
	4H	25.9	26.7	26.3	27.1	27.4	26.0	26.9	26.4	27.2	27.6	27.6
	6H	26.7	27.4	27.1	27.8	28.2	26.6	27.3	27.0	27.7	28.1	28.1
8H	12H	27.0	27.7	27.4	28.1	28.5	26.8	27.5	27.2	27.9	28.3	28.3
	2H	27.4	28.0	27.8	28.4	28.8	26.9	27.5	27.4	28.0	28.4	28.4
	3H	26.2	26.9	26.7	27.3	27.7	26.4	27.0	26.8	27.4	27.8	27.8
	4H	27.2	27.7	27.6	28.2	28.6	27.1	27.7	27.6	28.1	28.5	28.5
	6H	27.7	28.1	28.1	28.6	29.1	27.4	27.9	27.9	28.3	28.8	28.8
12H	12H	28.1	28.5	28.6	29.0	29.5	27.6	28.0	28.1	28.5	29.0	29.0
	4H	26.3	26.9	26.7	27.3	27.7	26.4	27.0	26.8	27.4	27.9	27.9
	6H	27.3	27.8	27.8	28.2	28.7	27.2	27.7	27.7	28.1	28.6	28.6
	8H	27.8	28.2	28.3	28.7	29.2	27.5	28.0	28.0	28.4	28.9	28.9
Variation of the observer position for the luminaires distances S												
S = 1.0H		+0.1 / -0.1					+0.1 / -0.1					
S = 1.5H		+0.2 / -0.3					+0.2 / -0.3					
S = 2.0H		+0.3 / -0.7					+0.4 / -0.7					
Standard table		BK07					BK06					
Correction Summand		6.1					5.7					
Corrected Glare Indices referring to 1650lm Total Luminous Flux												



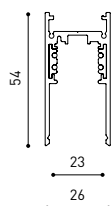
## TRACK 48V TRIMLESS

TRACK 48V TRIMLESS 1m	A338-01-00-   N   WT
TRACK 48V TRIMLESS 2m	A338-02-00-   N   WT
TRACK 48V TRIMLESS 3m	A338-03-00-   N   WT
TRACK 48V TRIMLESS Corner 90° One Plane	A338-06-00-   N   WT
TRACK 48V TRIMLESS Corner 90° Two Planes	A338-07-00-   N   WT

PLASTERBOARD CEILING, MANDATORY THICKNESS 12,5mm.  
RECOMMENDED FOR INSTALLATIONS WHERE THE PROFILE CAN BE  
INSTALLED BEFORE THE FALSE PLASTERBOARD CEILING.



TRIMLESS INSTALLATION GUIDE  
<https://youtu.be/tgGsQdaYe-w>



## TRACK 48V SURFACE

TRACK 48V SURFACE 1m	A338-11-00-   NT   WT
TRACK 48V SURFACE 2m	A338-12-00-   NT   WT
TRACK 48V SURFACE 3m	A338-13-00-   NT   WT
TRACK 48V SURFACE Corner 90° One Plane	A338-14-00-   NT   WT



## TRACK 48V SURFACE SHORT

TRACK 48V SURFACE SHORT 1m	A338-21-00-   NT   WT
TRACK 48V SURFACE SHORT 2m	A338-22-00-   NT   WT
TRACK 48V SURFACE SHORT 3m	A338-23-00-   NT   WT
TRACK 48V SURFACE SHORT Corner 90° One Plane	A338-24-00-   NT   WT

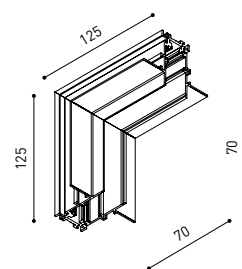


## TRACK 48V TRIMLESS Corner 90° One Plane



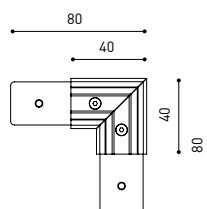
\*Electrical connection not included

## TRACK 48V TRIMLESS Corner 90° Two Planes



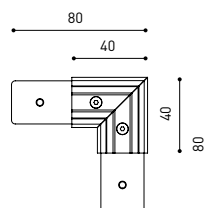
\*Electrical connection not included

## TRACK 48V SURFACE Corner 90° One Plane



Electrical connection not included  
Straight joiner included

## TRACK 48V SURFACE SHORT Corner 90° One Plane



Electrical connection not included  
Straight joiner included

COLOUR | N ■ RAL 9005 | NT ■ RAL 9005 | WT □ RAL 9016 |



DROP VOLTAGE TABLE

		CABLE LENGHT (m)			
		5	10	20	30
POWER (W)	CABLE SECTION (mm²)	TRACK LENGHT (m)			
		50	50	X	X
100	0,75	50	50	X	X
	1,5	50	50	40	25
150	0,75	40	15	X	X
	1,5	50	40	20	X

		P	V	D
CONSTANT VOLTAGE LED POWER SUPPLY	0434-01-61*   N I	100W	48V	298 x 16 x 19 mm
	0434-01-62	150W	48V	350 x 30 x 18 mm

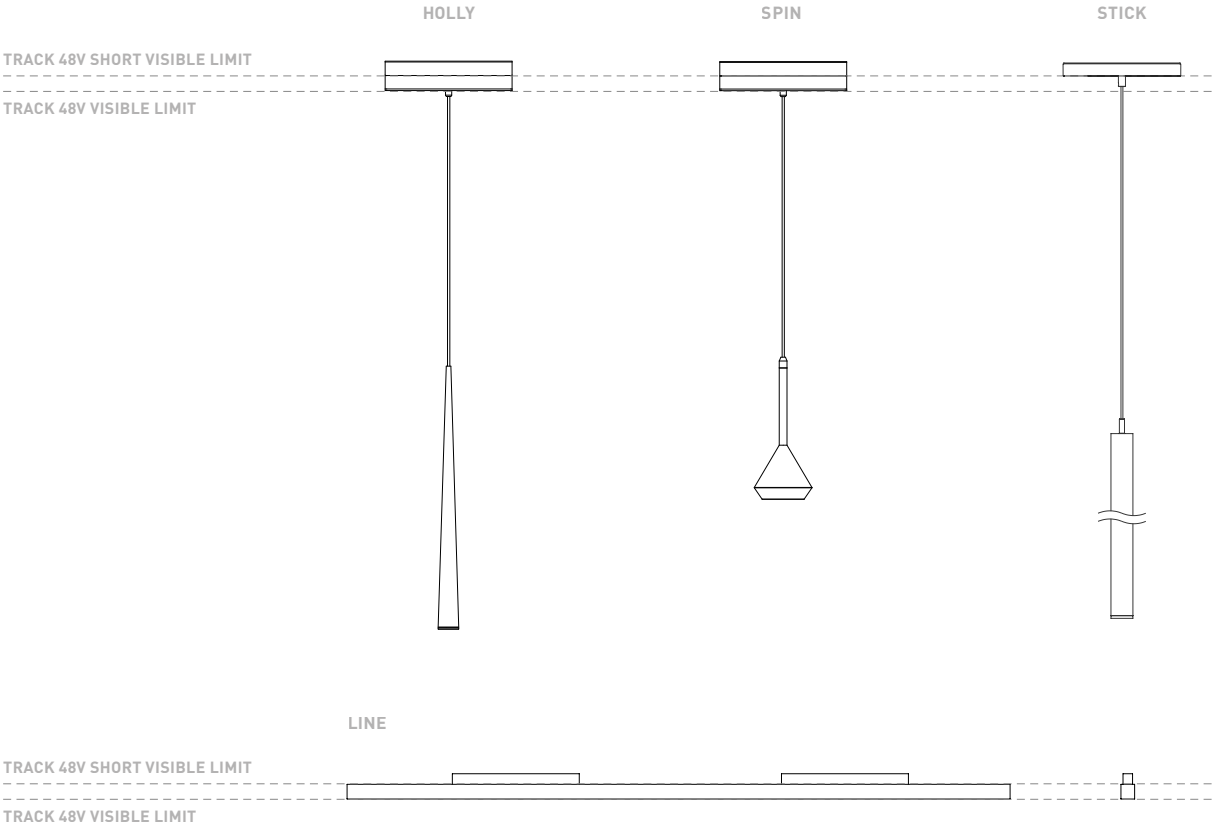
220 V ~  
240

\*To be installed inside the track.



COMPATIBILITY ACCORDING TO TYPE OF TRACK

TRACK 48V & TRACK 48V SURFACE SHORT



COLOUR | N ■ RAL 9005 |



## ALL 48V TRACK



**Live-End Connector 48V**

A338-00-01- | W | N |



**L-JOINT Connector 48V**

A338-00-12- | W | N |



**Corner 90° Connector One Plane 48V**

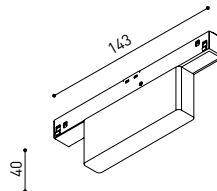
A338-00-24- | W | N |

\*Not suitable for trimless version



**Central Connector 48V**

A338-00-02- | W | N |



**Wireless Control 48V**

0434-01-31- | W | N | Casambi/AAG Stucchi App



**Cover Gap 1m 48V**

A338-00-30- | N | W |

## TRIMLESS 48V



**Trimless T-Bracket 48V**

A338-00-03



**Trimless Clamp for M6 ROD 48V**

A338-00-09

\*See accessories quantities



**Trimless Long T-Bracket 48V**

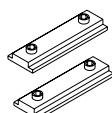
A338-00-04



**Trimless Track Clamp 48V**

A338-00-10

\*See accessories quantities



**Trimless Straight Joiner 48V (2 Units)**

A338-00-05- | WT | N |



**Trimless Suspension Kit 48V**

A338-00-08

\*See accessories quantities



**Trimless Plaster Installation Guard 1m 48V**

A338-00-21

**\* SUGGESTED MOUNTING ACCESSORIES QUANTITIES**

1000mm - 2 Pcs.

2000mm - 3 Pcs.

3000mm - 4 Pcs.

## SURFACE, SUSPENSION , SURFACE SHORT & SUSPENSION SHORT 48V



**Surface Straight Joiner 48V**

A338-00-11

COLOUR | N ■ RAL 9005 | W □ RAL 9016 | NT ■ RAL 9005 | WT □ RAL 9016 |

## TRIMLESS, SURFACE & SUSPENSION 48V



### End 48V

A338-00-06- | WT | NT |



### End feed 48V

A338-00-07- | WT | NT |

## SURFACE & SUSPENSION SHORT 48V



### Short End 48V

A338-00-18- | WT | NT |



### Short End feed 48V

A338-00-19- | WT | NT |

## SURFACE & SURFACE SHORT 48V



### Power Supply Case 48V

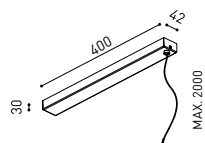
A338-00-29- | NT | WT | 150 W

220 V ~  
240



To be installed aside 48V Surface Tracks

## SUSPENSION & SUSPENSION SHORT 48V



### Wired Power Supply Case 48V

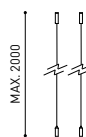
A338-00-25- | NT | WT | 150 W NO DIM

A338-00-26- | NT | WT | 150 W DIM

220 V ~  
240

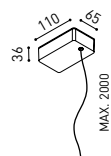


INCL



### Suspension Kit 48V [2 units]

A338-00-15- | WT | NT |



### Suspension Feed Kit 48V

A338-00-16- | W | N | NO DIM

A338-00-17- | W | N | DIM

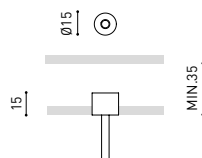
For remote power supply

A338-00-27- | W | N | NO DIM

A338-00-28- | W | N | DIM

For power supply inside the track

## WIRE TRIMLESS ACCESSORIES



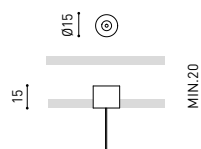
### FEED

#### MAINS TRIMLESS\*

A023-00-01- | W | N | NO DIM

#### MAINS THICK TRIMLESS\*

A023-00-02- | W | N | DIM



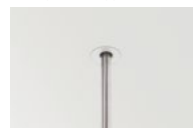
### FASTENING

#### STEEL CABLE TRIMLESS\*

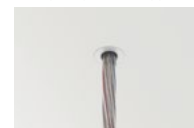
A023-00-05- | W | N |



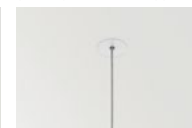
MAINS TRIMLESS



MAINS THICK TRIMLESS



STEEL CABLE TRIMLESS





Fuente de luz (LED) reemplazable por un profesional autorizado

Replaceable (LED only) light source by an authorized professional.

Source lumineuse (LED) remplaçable par un professionnel agréé

Sorgente luminosa (LED) sostituibile da parte di un professionista autorizzato

Austauschbare (LED) Lichtquelle durch einen autorisierten Fachmann



Equipo de control reemplazable por un profesional autorizado

Replaceable control gear by an authorized professional

Dispositif de commande remplaçable par un professionnel agréé

Alimentatore sostituibile da parte di un professionista autorizzato

Auswechselbares Betriebsgerät durch autorisierten Fachmann

INSTRUCCIONES PARA EL FINAL DE VIDA Y LA ELIMINACIÓN LOS COMPONENTES  
INSTRUCTIONS ON END-OF-LIFE AND COMPONENT DISPOSAL  
INSTRUCTIONS POUR LA GESTION DES COMPOSANTS EN FIN DE VIE ET LEUR MISE AU REBUT  
ISTRUZIONI PER IL FINE VITA E LO SMALTIMENTO DEI COMPONENTI  
ANWEISUNGEN ZUR ENTSORGUNG DER LEUCHTENKOMPONENTEN



Interrumpir la alimentación del aparato  
Cut the power supply to the luminaire  
Couper l'alimentation du luminaire  
Interrompere l'alimentazione dell'apparecchio  
Stromversorgung der Leuchte unterbrechen



Quitar la(s) fuente(s) de luz para el desecho  
Remove light source(s) for disposal  
Retirer la (les) source(s) lumineuse(s) pour l'élimination  
Rimuovere la/le sorgente/e di luce per lo smaltimento  
Lichtquelle(n) zur Entsorgung entfernen



Quitar la batería para el desecho  
Remove the battery for decommissioning  
Retirer la batterie pour sa mise au rebut  
Rimuovere la batteria per la dismissione  
Die Batterie ordnungsgemäß entsorgen



Quitar el equipo de control para el desecho  
Remove control gear for disposal  
Retirer le dispositif de commande pour l'élimination  
Rimuovere l'alimentatore per lo smaltimento  
Betriebsgerät zur Entsorgung ausbauen

Enviar los materiales a un centro de recogida RAEE  
Send the materials to a WEEE collection centre  
Envoyer les matériaux dans une déchetterie DEEE  
Inviare i materiali ad un centro di raccolta RAEE  
Die Materialien in einem WEEE-Zentrum entsorgen

